



Installation Manual

Remote Controlled Doors



Contents

Introduction	3
Serial Number Location	3
Disclaimer	3
Parts Identification	4
Parts Description	5
Assembly Instructions	5
Pairing The Handheld Remote	10
General Trouble Shooting	11

Introduction

Thank you for purchasing a remote controlled door. Every effort has been made to provide you with a reliable product, specifically designed to complement and improve your farming operation.

Please read this manual thoroughly before installing the remote controlled door. The information included in this manual is crucial for proper installation.

All information in this publication is based on the latest product information available at the time of printing. Grainline is continually improving the design and performance of their products. They reserve the right to make any changes at any time without notice and without incurring any obligation. No part of this publication may be reproduced without written permission.

Serial Number Location

The serial number location for your remote controlled door is shown in the figure below. Please have the serial and model number ready when ordering parts, requesting service or other information. Record your details below for easy reference.

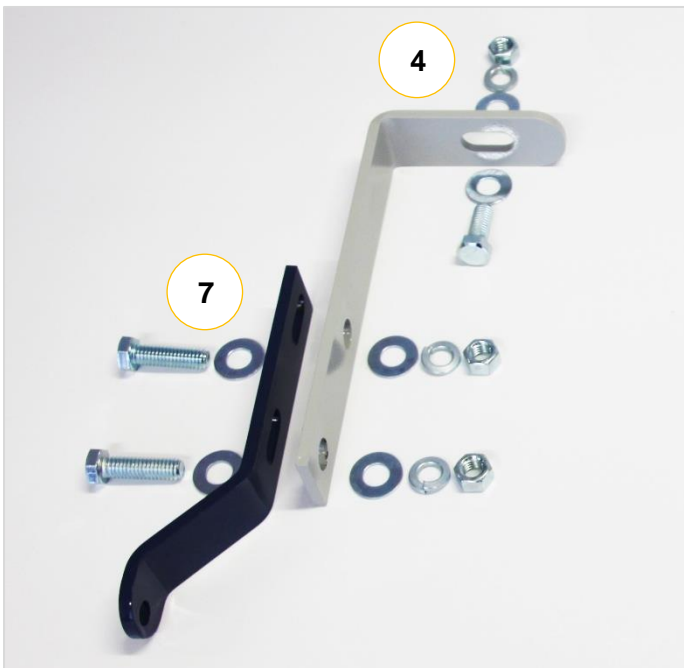
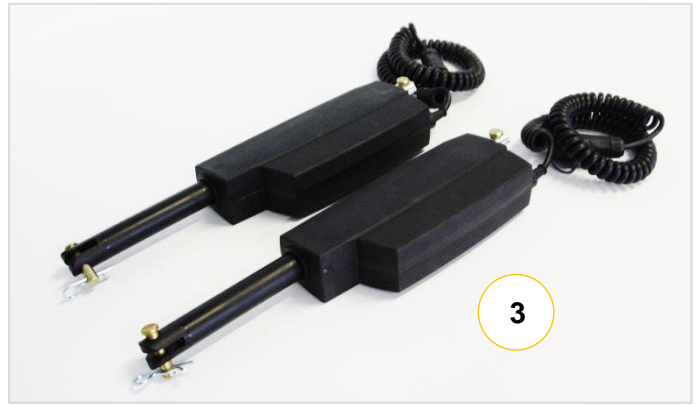
Model:	R	C	K	-		Serial Number:			-				
---------------	---	---	---	---	--	-----------------------	--	--	---	--	--	--	--



Disclaimer

Grainline, their employees, distributors, and agents cannot be held responsible for any faulty electrical parts, installation, connections, insulation, leads, plugs, wiring or any other part used for the operation of the remote controlled door. Full responsibility rests solely and completely on the end user for the correct and legal installation thereof. Intended use of the remote controlled door is for handling grain and fertiliser. Use in any other way is considered as contrary to the intended use and is not covered by warranty.

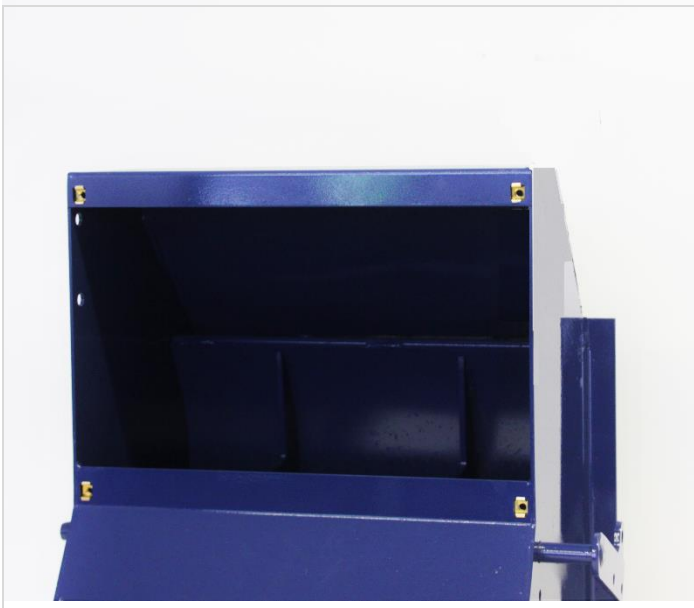
Parts Identification



Parts Description

1. Control box mounting cage
2. Remote control receiver box with manual override switches and power lead.
3. 12 volt 100mm stroke linear actuators with clevis pins and R clips.
4. Left hand cage mounting bracket with 3/8" x 1" bolt, nut, and washers.
5. Right hand cage mounting bracket with 3/8" x 1" bolt, nut, and washers.
6. Left hand actuator bracket with 3/8" x 1 1/4" bolt, nut, and washers.
7. Right hand actuator bracket with 3/8" x 1 1/4" bolt, nut, and washers.
8. LED auxiliary work light.
9. Remote control handheld transmitter with backlit keypad and LED torch.

Assembly Instructions



Step 1.

Remove the front cover on the top section of the Rota door by undoing 4 x 6mm bolts.



Step 2.

Fit R/H actuator bracket to upper holes of Rota door.

Sandwich R/H cage bracket between Rota door and R/H actuator bracket.

Bolt together using 2 x 3/8 x 1 1/4" bolt & nut, 4 x 3/8 flat washer and 2 x 3/8 spring washer.



Step 3.

Fit L/H actuator bracket to upper holes of Rota Door. Ensure actuator bracket faces downwards.

Sandwich L/H cage bracket between Rota door and R/H anchor bracket.

Bolt together using 2 x 3/8 x 1 1/4" bolt & nut, 4 x 3/8 flat washer and 2 x 3/8 spring washer.



Step 4.

Finger tighten the bolts only.

Actuator brackets may need adjustment later.



Step 5.

Ensure Rota doors are in the fully closed position and the actuator ram is fully extended.



Step 6.

By using clevis pin & R clip, secure actuator to actuator bracket & lever arm on Rota door.



Step 7.

By using Clevis pin & R clip, secure actuator to actuator bracket & lever arm on Rota door.

If Actuator bracket holes do not line up, adjust brackets accordingly and secure actuator with clevis pin & R clip.

Fully tighten bolts & nuts on actuator brackets.



Step 8.

Remove control box from cage mount frame, by undoing the four 6mm bolts & nuts.

Secure cage mounting frame to cage brackets using two 3/8 x 1" bolts, nuts, flat & spring washers.



Step 9.
Position control box into mounting cage and secure with 6 mm nuts and washers.



Step 10.
Plug in actuators to corresponding Door 1 & Door 2 sockets.



Step 11.
Assemble and secure LED work light onto the control box mounting cage, using supplied bracket, bolts, nuts and washers.
Plug light into Auxiliary socket on side of control box.



Step 12.
Tighten actuator bracket's bolts & nuts.

Replace grain door front cover and tighten 4 x 6mm bolts.



Step 13.
Wire control box power lead to truck's battery, ensuring a full 12 volt supply.

Test connection and ensure actuators operate.

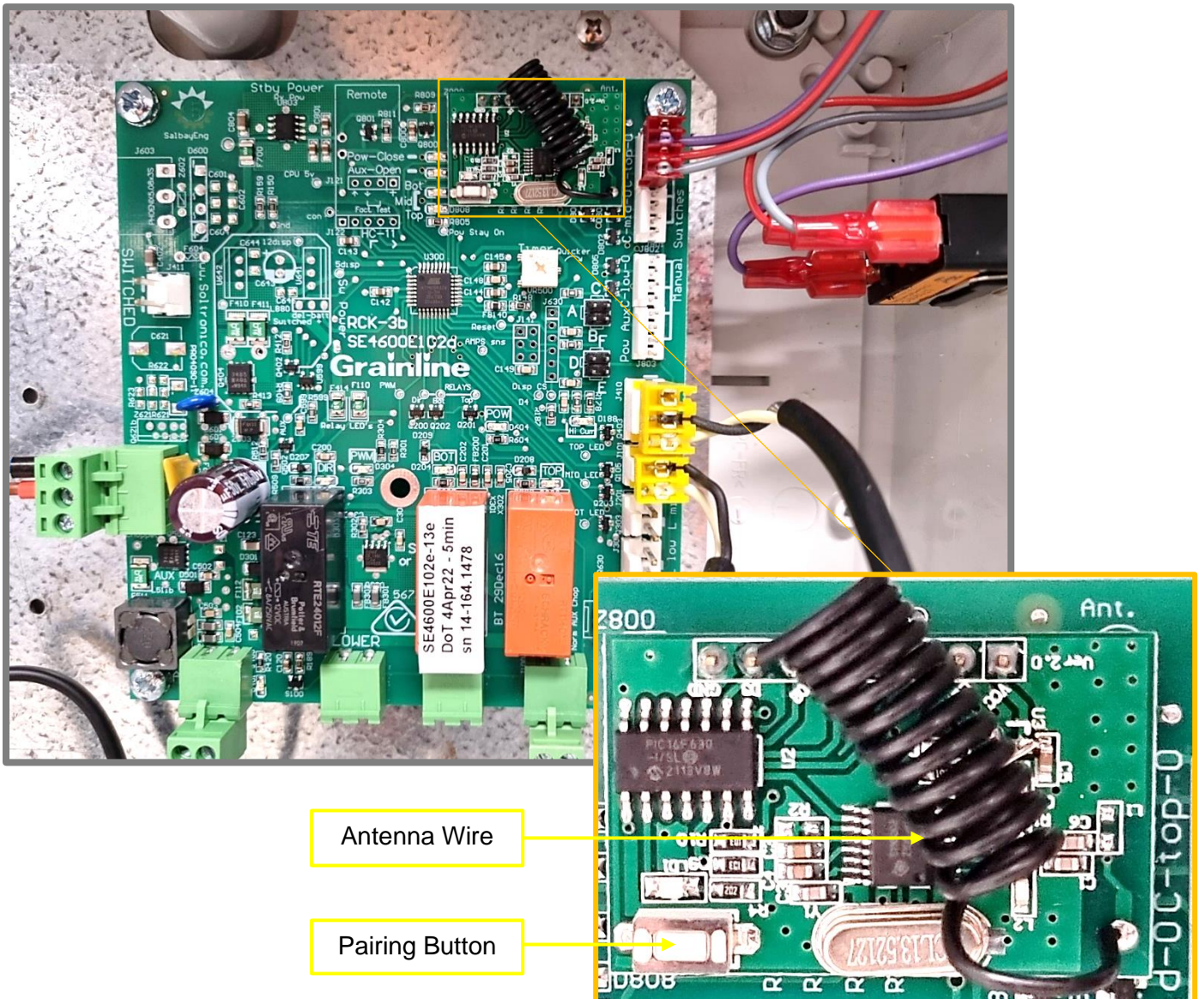


Important
Please note that the pin marked "1" of the plug is positive and must correspond with pin marked "1" on socket.

Markings are seen at the base of pins on each half of the assembly. The supplied wiring uses the brown wire as positive and the blue wire as negative.

Pairing The Handheld Remote

1. Check that there is a 12 volt power supply to the Remote Control Unit and that it is operating on the manual override switches. If it does not operate on the manual switches, check the power source and wiring polarity.
2. With a working power supply established, remove the lid of the control box via the 6 large, flat head, turn bolts around the edges of the lid.
3. With the lid removed, locate the small, white button to the left of the antenna wire. The button and antenna wire are both located on the same circuit board, which is the smaller one mounted on top of the main.
4. With the white button now located, have your hand held remote ready.
5. Press the white button for 2 seconds. A blue light will appear from near the button and then go out. Release the white button after 2 seconds and hold down the "LIGHT" button (bottom left) on your hand held transmitter.
6. Hold down the "LIGHT" button until the auxiliary work light comes on or the unit clicks and allows normal operation from the handheld transmitter.



General Trouble Shooting

Problem	Solution
Box is connected and makes a distinct clicking/switching sound but no action.	This could be because of reverse polarity on the control box power supply cable. Check that the plug or connection is correctly connected to the trucks 12 volt power supply with positive and negative correctly wired.
No communication between the handheld transmitter and control box.	Install a new nine volt battery in the handheld transmitter. If problem persists proceed with pairing the remote to the receiver as shown on page 10. If this does not fix the issue check power supply has a full 12 volts. A drop in voltage will prevent the receiver from working correctly.
The handheld transmitter only works at very close range.	Open the control box and check that the antenna wire is still connected to the receiver board. See page 10 for antenna wire location.
The unit operates erratically	Check that the power supply to the control box is 12 volts. A 24 volt supply will affect the operation of the control box and linear actuators.
Not able to get power into the control box.	If the receiver board is totally unresponsive with 12 volt power connected, it could be that the receiver board has failed, and the entire board will need to be replaced. Contact Grainline or your local dealer.
Some transmitter buttons not working.	This could be as a result of a damaged keypad membrane. The only way to fix this is to replace the membrane decal on the face of the handheld transmitter. Contact Grainline or your local dealer.
I have power to the box and an actuator is not working.	Unplug faulty actuator and connect to the port of the working actuator. If actuator works then the issue will be with the connections or receiver board and the unit will need to be sent in for assessment.



1 Hartog Place, East Wagga Wagga NSW 2650,
Australia

Phone: 1800 810 498

Email: sales@grainline.com.au

Website: www.grainline.com.au



Scan to request replacement manuals & spare parts.
