



# Operators & Installation Manual

## Side Shift Augers



## Contents

Introduction .....	3
Disclaimer .....	3
Induction Sheet for Operators.....	4
Grainline Warranty Conditions.....	5

### Section 1. Safety Information

1.1 Hazard Labels .....	5
1.2 General Safety .....	6
1.3 Intended Use .....	6
1.4 Correct Usage .....	6
1.5 Incorrect Usage .....	6

### Section 2. Installation

2.1 Installing Auger .....	7
2.2 Hydraulic Schematic for Single Auger Setup .....	9
2.3 Hydraulic Schematic for Double Auger Setup .....	10

### Section 3. Operation

3.1 Operation .....	11
---------------------	----

### Section 4. Storage

4.1 Long Term Storage .....	13
-----------------------------	----

## Introduction

Thank you for purchasing a Grainline Side Shift Auger. Every effort has been made to provide you with a reliable grain auger, specifically designed to complement and improve your farming operation.

Please read this manual thoroughly before operating your grain auger. The information included in this manual is crucial for the proper installation, operation, and maintenance of your grain auger.

All information in this publication is based on the latest product information available at the time of printing. Grainline is continually improving the design and performance of their products. They reserve the right to make any changes at any time without notice and without incurring any obligation. No part of this publication may be reproduced without written permission.



## Disclaimer

Grainline, their employees, distributors, and agents cannot be held responsible for any faulty electrical parts, installation, connections, insulation, leads, plugs, wiring or any other part used for the operation of the grain auger. Full responsibility rests solely and completely on the end user for the correct and legal installation thereof. Intended use of the auger, handling grain, pulse crops, treated seeds or similar materials. Use in any other way is considered as contrary to the intended use and is not covered by warranty.



## Grainline Warranty Conditions

Limited 2 year warranty for all products manufactured by Grainline.

---

### What this warranty will cover.

Grainline will at its own discretion, repair or replace without charge any part of our products which may be found defective in material and/or workmanship within 24 months of the original purchase date.

At Grainline's request the customer will make the defective part available for inspection by Grainline or a dealer of Grainline products so that the cause of the faulty / defective part can be identified for accurate repair.

- It is the owner's responsibility to transport defective parts and/or units to their local service dealer who can negotiate a call-out fee at the owner's expense.
- A warranty form must be completed and sent to Grainline and authorisation is needed before a service dealer is able to commence any repairs on Grainline products.

### What this warranty will not cover.

- Defects caused by depreciation or damage caused by normal wear, accidents, improper maintenance, improper use and abuse of the product, alterations, or failure to follow the instructions contained in the owner's manual for operation and maintenance.
  - Transport cost for making Grainline products available for inspection and/or repair to and from the place where the warranty work is performed.
- 

### How to obtain service under this warranty.

Warranty service can be arranged by contacting either your Grainline Dealer or Grainline direct on 1800 810 498. Please have the auger model and serial number available as this will be required by the service technician.

## Section 1. Safety Information

The owner is responsible for the safe operation and maintenance of this equipment. Please note that information of special importance has been highlighted in this manual using the below signal words.

### 1.1 Hazard Labels

#### **DANGER**

Indicates an imminently hazardous situation that, if not avoided, will result in serious injury or death.

#### **WARNING**

Indicates a hazardous situation that, if not avoided, could result in serious injury or death.

#### **CAUTION**

Indicates a hazardous situation that, if not avoided may result in minor or moderate injury.

#### **NOTICE**

Indicates a potentially hazardous situation that, if not avoided, may result in property damage

## 1.2 General Safety

The Grainline grain auger must not be used when the operator is:

- Taking medication that causes drowsiness.
- Under the influence of alcohol or drugs
- Incompetent
- Not aware of the operating procedures

Manufacturers, retailers, owners, and operators all have responsibilities with regards to safety. Be aware of your responsibilities and carry them out. The owner or designated officer is responsible for the safe operation and maintenance of this equipment. The most important part of safe operation is a safety conscious operator who always remembers to:

- Keep children away from grain auger work area.
- Do not operate grain auger with any safety shield, cover or guard removed.
- Keep body, hair, and clothing away from all moving parts.
- Inspect bolts and nuts and intake area before operating grain auger.
- Replace, repair, tighten and clean out any parts or areas that need attention.

## 1.3 Intended Use

The Grainline Side Shift Auger has been designed and manufactured, to assist in the safe and effective transfer of various grain types. Use of the auger in any other way is considered as misuse and is not covered by the warranty.

## 1.4 Correct Usage

The Grainline auger must be used in accordance with the safety instructions contained within this manual. Only competent personnel who have received proper training and are familiar with the machine should operate and perform any service work on the auger. When the auger is being used hearing protection must be worn, and it is the owner's responsibility to provide the appropriate hearing protection to all others involved in the operation of the auger. When the auger is not in use, it must be immobilized – i.e., turned off and key removed from the power source. Please note, where guards and safety features are removed in this manual it is for illustration purposes only.

## 1.5 Incorrect Usage

The Grainline auger must not be used for anything other than the intended purpose set out by Grainline.

Incorrect use of the auger includes:

- Using the auger to transfer grains or materials other than dry, free-flowing food grains and fertiliser.

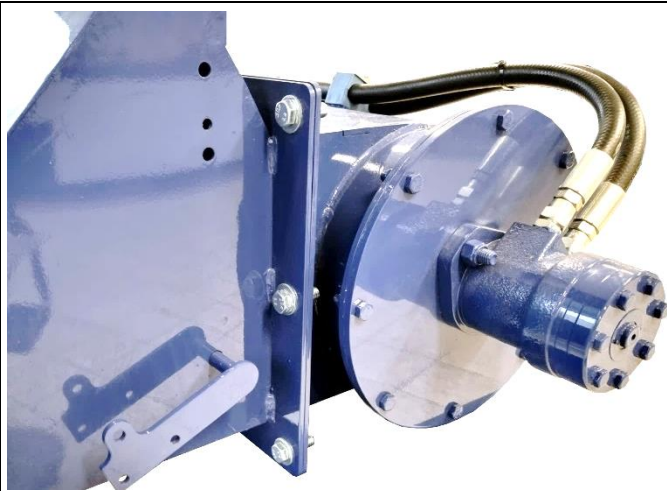
**WARNING:** Any modification to the Grainline auger without the approval of Grainline will void all warranty and could result in death or serious injury.

## Section 2. Installation

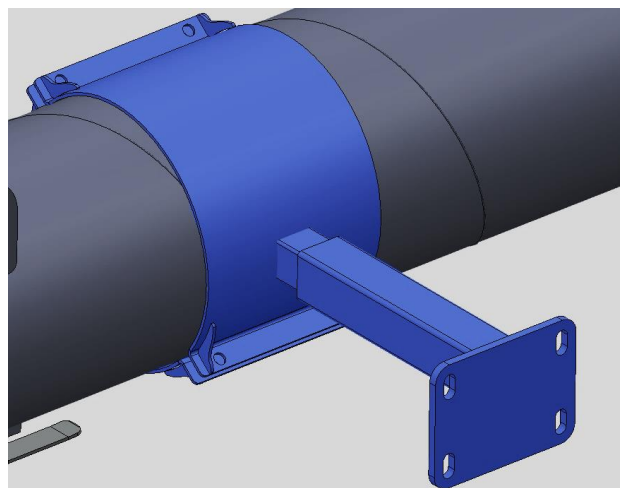
### 2.1 Installing Auger

1. If you are using a remote controlled door with your auger, start by attaching this to your truck or trailer, following the instructions supplied in the remote control box. Once the door is fitted and a 12 volt power supply is connected proceed with the following steps.

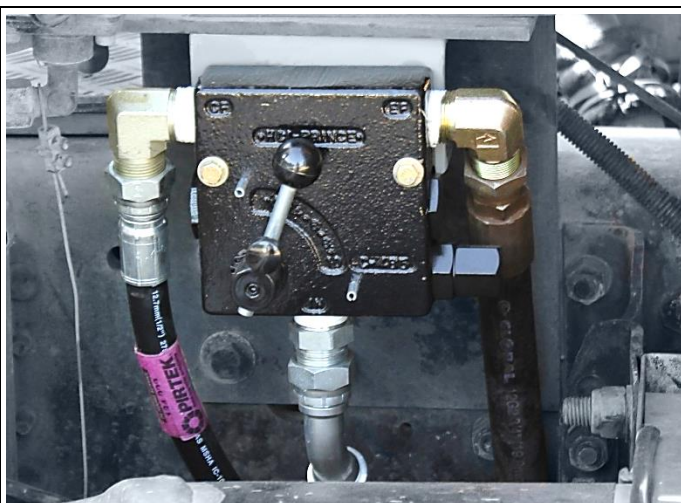
2. Bolt the auger flange to the door flange using the supplied M12 x 35mm bolts, washers and nyloc nuts.



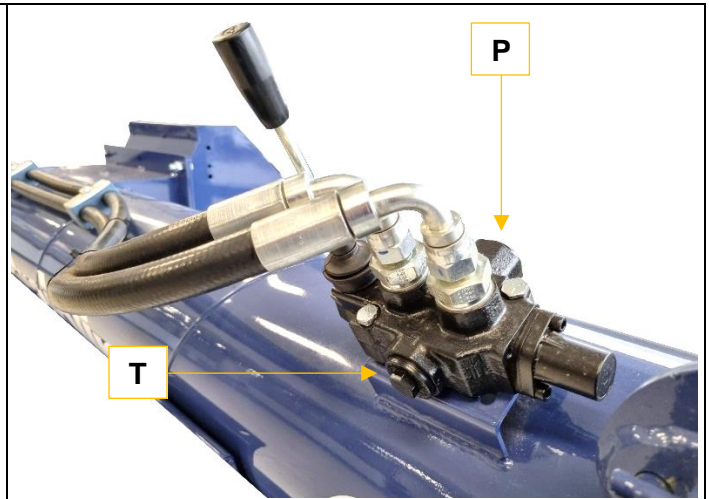
3. Bolt the support bracket to the tipper and auger using the supplied M12 x 65mm bolts, washers and nyloc nuts.



4. Connect diverter valve to hydraulic system and run hydraulic plumbing supply to rear of tipper. See hydraulic schematics on pages 9 & 10 for additional information.



5. Connect pressure and return hydraulic lines to the control valve.



6. Test system and adjust flow on diverter valve as required.



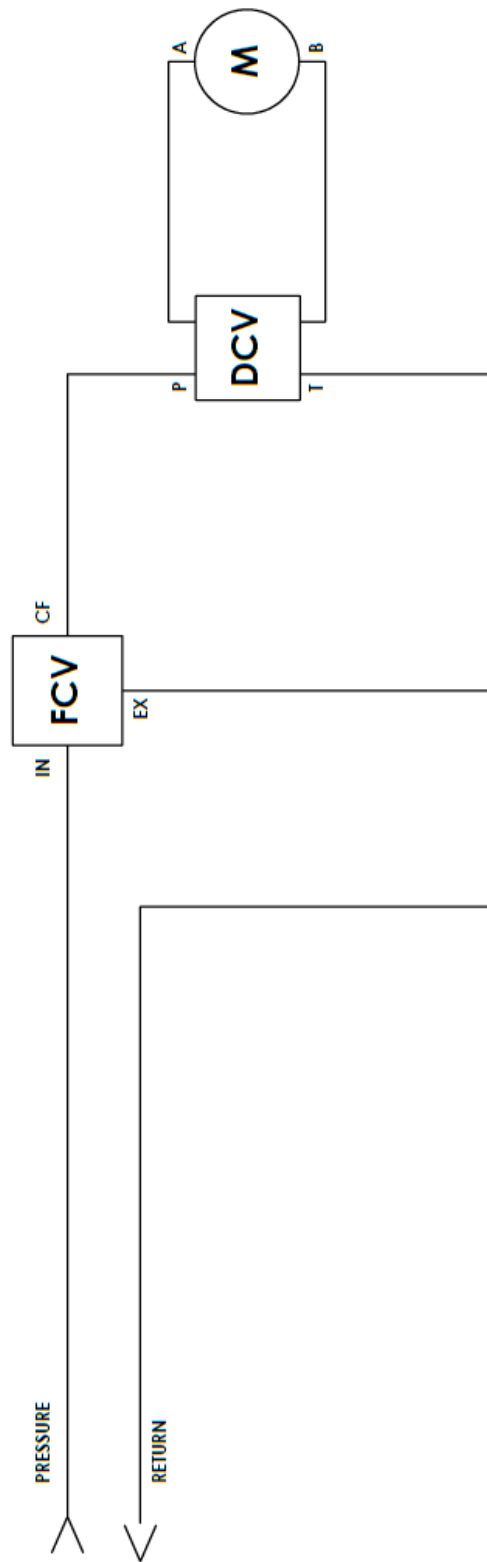
7. If you are running a double auger setup, a ball valve will also need to be installed as per the schematic on page 10. This will allow you to maximise hydraulic efficiency by directing flow to the relative auger.



**WARNING:** Hydraulic systems operate under high pressure. Ensure all fittings are correctly fastened prior to testing system.

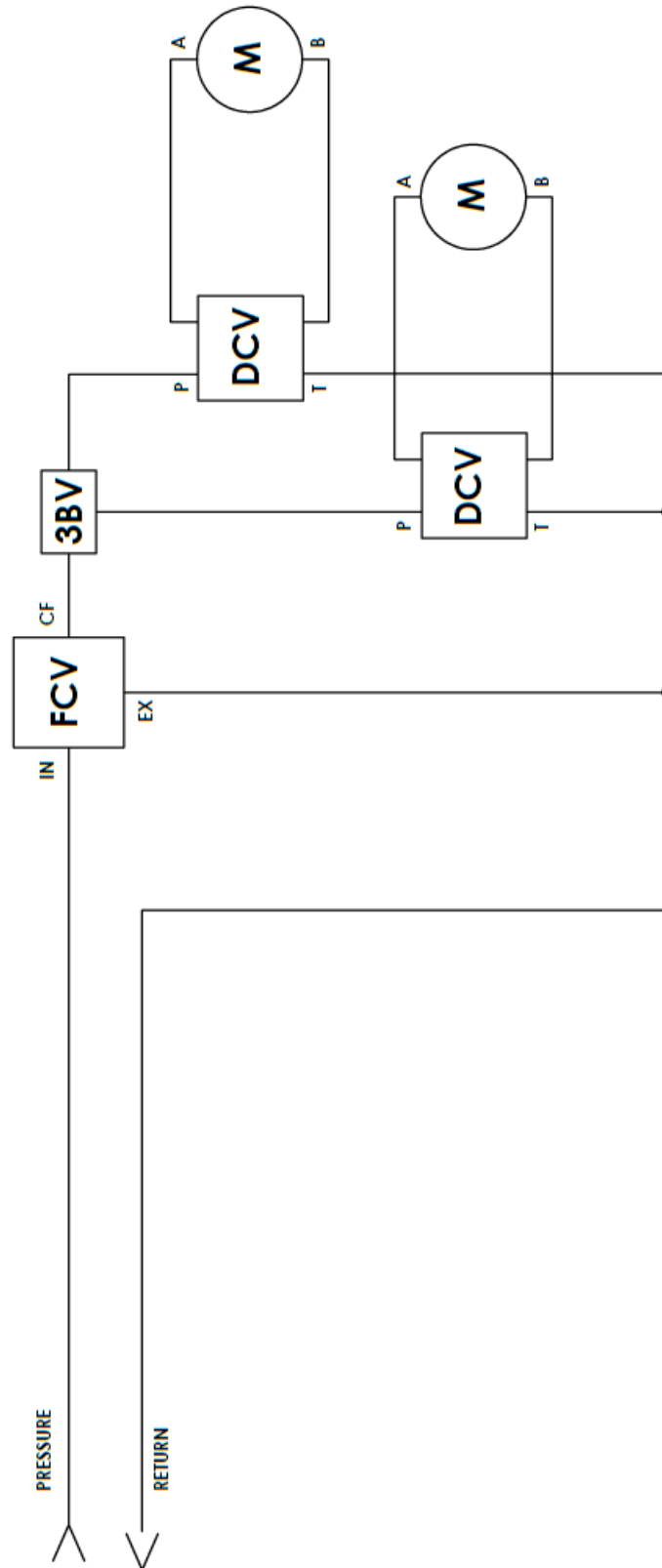
## 2.2 Hydraulic Schematic for Single Auger Setup

**FCV - FLOW CONTROL VALVE**  
**DCV - DIRECTIONAL CONTROL VALVE**  
**M - MOTOR**



### 2.3 Hydraulic Schematic for Double Auger Setup

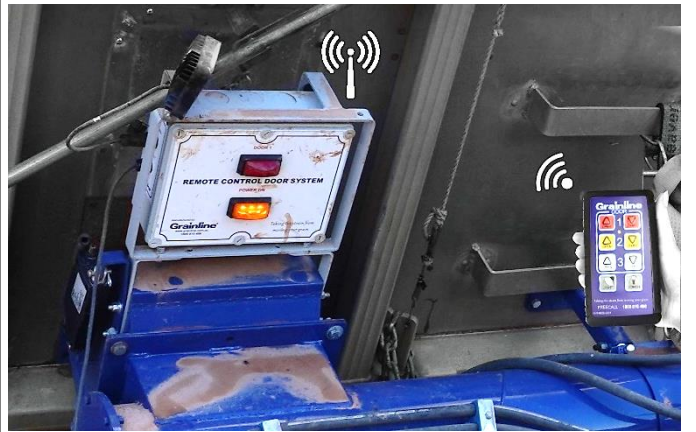
**FCV - FLOW CONTROL VALVE**  
**DCV - DIRECTIONAL CONTROL VALVE**  
**M - MOTOR**  
**3BV - 3 WAY BALL VALVE**



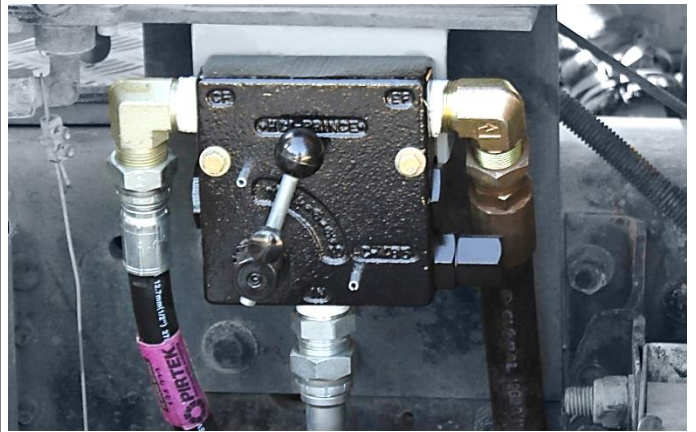
## Section 3. Operation

### 3.1 Operation

1. Ensure power is connected to the remote controlled door and that the handheld remote is communicating with the control box.



2. Ensure diverter valve is set for correct oil flow.



3. Fold end of auger out and latch into position.



4. Move truck into position and raise tipper.



5. Engage hydraulic controls and auger will start.



6. Open remote control door and product will start to flow.



7. Upon completion, close remote control door, disengage hydraulics and fold end section of auger into stowed position. Ensure latched into place.



**NOTICE:** Once end of auger has been folded into stowed position, ensure that it is latched into place to prevent it from moving during transport.

## Section 4. Storage

### 4.1 Long Term Storage

If augers are not being used for an extended period, it is advisable to remove them from the tipper and place them into storage. The following steps are a guide on placing augers into storage.

**CAUTION:** A form of mechanical lifting will be required to remove augers from the tipper. Do not try to manually lift the augers as this could result in serious injury.

**DANGER:** Wear correct PPE and ensure caution is used when using pressure washers, compressed air and lifting equipment to carry out the task.

1. Clean auger assembly to remove all dust and debris. This will reduce the chances of any corrosion occurring during storage.
2. Disconnect the hydraulic pressure and return lines from the control valve and secure hydraulic hoses on tipper to prevent damage.
3. Disconnect 12 volt power supply from the remote controlled door and coil cable to prevent snagging.
4. Using a lifting device with a rated sling, support the auger, then proceed to remove the auger holding bracket and bolts holding the auger to the remote controlled door.
5. Lower the auger onto a pallet or similar for easy movement.
6. Remove remote controlled door from tipper and place on same pallet as auger.
7. If water has been used in the cleaning process, ensure that all items are fully dried to prevent corrosion.
8. Inspect all components for signs of wear or damage and fix or replace as may be necessary.

Notes:



1 Hartog Place, East Wagga Wagga NSW 2650, Australia

Phone: 1800 810 498

Email: [sales@grainline.com.au](mailto:sales@grainline.com.au)

Website: [www.grainline.com.au](http://www.grainline.com.au)



Scan to request replacement manuals & spare parts.

---