


Grainline

BUNKER AUGERS

PTO BUNKER AUGER

SELF-PROPELLED BUNKER AUGER

PTO DUAL BUNKER AUGER

BUNKER OUTLOADER

DRIVE OVER HOPPER



www.grainline.com.au | 1800 810 498

PTO BUNKER AUGER



4 Directional Spout Control



Low Profile Hopper

Cost effective option for filling grain bunkers up to 38m wide

- Parallel bunker repositioning in less than 2 minutes
- Large full width triple flight drive over hopper
- Electric directional spout control
- PTO Drive
- Hydraulic folding ramps & lift (raises & lowers wheels)
- Optional barrel lengths to suit bunkers up to 38m wide
- Up to 340 tonne/hr constant flow
- Simple operation by receival personnel & delivery drivers



www.grainline.com.au | 1800 810 498

PTO BUNKER AUGER SPECS

Size	15 inch diameter, with a 15, 18 or 21 metre barrel including swivel spout & lights
Tractor Requirements	180-200 Horsepower
Operating Speed	540 Flight RPM on a 1-1.85 Ratio Gear Box = 1,000 PTO Tractor Required 540 Flight RPM on a 1-1 Ratio Gear Box = 540 PTO Tractor Required
Bunker Size	Suits up to 38m wide bunker
Hopper	3.5m x 1.5m x 300mm Low Profile Triple Flighted Hopper
Hopper/Transfer Flight/ Auger	3 x 8" Hopper Flight 2 x 10" Transfer Flight 2 x 12" Lift/Incline Flight 1 x 15" Auger Flight
Auger Capacity	Up to 340 tonne/hr (wheat)
Ramps	4.2 m x 3.5 m Hydraulic Folding, Including Bi-Folding Extensions (ramp height 300mm, easily negotiated by trucks & drivers)
Auger Barrel	15 inches (380mm), 3mm with Rotatable Barrel
Flighting	355mm x 355mm x 4.8mm with 80nb (88.9 mm) Bore
Finish	Grainline Blue 2-pac paint with Powder Coated Ramps
Operating Angle	27 degrees
Spout Movement	Electric Spout Movement
Warranty	12 months



SELF-PROPELLED BUNKER AUGER



Volvo Penta 182HP Common Rail Turbo Diesel

Self-Propelled auger for filling grain bunkers up to 38m wide

- Parallel bunker repositioning in less than 1 minute
- Large full width triple flight drive over hopper
- Electric directional spout control
- No tractor required
- Hydraulic pumps directly mounted to motor for wheel drive and machine/ramp lift
- Clutch engage direct drive to 3:1 gearbox
- Up to 380 tonne/hr constant flow
- Skid steer - Lateral and horizontal movement
- Ramp up smooth operation (engine will sense load and ramp up to maintain 1620rpm)



Low Profile Hopper



www.grainline.com.au | 1800 810 498

SELF-PROPELLED BUNKER AUGER SPECS

Size	15 inch diameter, with a 15, 18 or 21 metre barrel including swivel spout & lights
Engine	Volvo Penta TAD542VE 182HP Common Rail Turbo Diesel
Operating Speed	540 Flight RPM on a 1-1.85 Ratio Gear Box = 1,000 PTO
Fuel Tank	265L Fuel Tank
Hopper	3.5m x 1.5m x 300mm Low Profile Triple Flighted Hopper
Hopper/Transfer Flight/ Auger	3 x 8" Hopper Flight 2 x 10" Transfer Flight 2 x 12" Lift/Incline Flight 1 x 15" Auger Flight
Auger Capacity	Up to 380 tonne/hr (wheat)
Ramps	4.2 m x 3.5 m Hydraulic Folding, Including Bi-Folding Extensions (ramp height 300mm, easily negotiated by trucks & drivers)
Auger Barrel	15 inches (380mm), 3mm with Rotatable Barrel
Flighting	355mm x 355mm x 4.8mm with 80nb (88.9 mm) Bore
Finish	Grainline Blue 2-pac paint with Powder Coated Ramps
Operating Angle	27 degrees
Spout Movement	Electric Spout Movement
Control Option	Remote Control with stop-and-go light function
Warranty	12 months

PTO DUAL BUNKER AUGER



A high capacity solution for filling grain bunkers up to 38m wide

- Parallel bunker repositioning in less than 2 minutes
- Large full width triple flight drive over hopper
- Electric directional spout control
- PTO Drive
- Hydraulic folding ramps & lift (raises & lowers wheels)
- Optional barrel lengths to suit bunkers up to 38m wide
- Up to 650 tonne/hr constant flow - wheat
- Simple operation by receival personnel & delivery drivers



Low Profile Hopper



www.grainline.com.au | 1800 810 498

PTO DUAL BUNKER AUGER SPECS

Barrel Size	Dual 15 inch diameter, with an 18 or 21 metre barrel including swivel spout & lights
Tractor Requirements	350 Horsepower
Operating Speed	540 Flight RPM on a 1-1.85 Ratio Gear Box = 1,000 PTO
Bunker Size	Suits up to 38m wide bunker
Hopper	3.5m x 3.15m x 300mm Low Profile Triple Flighted Hopper
Hopper/Transfer Flight/ Auger	6 x 8" Hopper Flight 4 x 10" Transfer Flight 4 x 12" Lift/Incline Flight 2 x 15" Auger Flight
Auger Capacity	Up to 650 tonne/hr (wheat)
Ramps	4.2 m x 3.5 m Hydraulic Folding, Including Bi-Folding Extensions (ramp height 300mm, easily negotiated by trucks & drivers)
Auger Barrel	Dual 15 inch (380mm), 3mm with Rotatable Barrel
Flighting	355mm x 355mm x 4.8mm with 80nb (88.9 mm) Bore
Finish	Grainline Blue 2-pac paint with Powder Coated Ramps
Operating Angle	27 degrees
Spout Movement	Electric Spout Movement
Warranty	12 months



BUNKER OUTLOADER



Perfect for emptying grain bunkers. Powered by a water-cooled Yanmar diesel engine or PTO tractor. Features a high-capacity 15" outloading auger with an 8m barrel. Optional directional spout offers precise grain flow control, improving the filling process. Outloading capacity: up to 340 tonnes/hr (wheat).



Diesel Drive Option



PTO Tractor Driven



www.grainline.com.au | 1800 810 498

BUNKER OUTLOADER SPECS

Auger Size	15 inch diameter (380mm) x 3mm wall diameter with 8m long barrel
Operating Flight Speed	540 Flight RPM on a 1-1.85 Ratio Gear Box (requires tractor with 1,000 RPM PTO)
Outloading Capacity	Approximately 340 tonne/hr (wheat)
Auger Flighting	355mm x 355mm x 4.8mm welded with 80nb (88.9 mm) Bore Centre Pipe
Finish	Grainline Blue 2-pac Polyurethane Paint
Operating Angle	40 degrees
Warranty	12 months



DRIVE OVER HOPPER



DRIVE OVER HOPPER SPECS

Engine	46hp Water cooled Yanmar diesel engine
Augers	2 x 12" augers
Unloading Capacity	Up to 350 T/h (wheat)
Hopper Flights	5 x 6" auger flights
Auger Outlet Height	1.97m
Hopper Dimensions	3.3m w x 1.5m l x 0.24m h
Operational Dimensions	9.9m w x 6.5m l x 2.6m h
Transport Dimensions	9.9m l x 2.0m w x 2.7m h
Standard Features	Hydraulic drive wheel and steering Hydraulic ramp and gate folding
Warranty	12 months



www.grainline.com.au | 1800 810 498

Quick and easy to shift with hydraulic lift, drive, and steer.

Featuring a large hopper with a low-profile design, it's built to withstand harsh Australian conditions and ensures safe, efficient operations without splitting trailers or reversing trucks. Tow hitch provided for towable option.



Easy-To-Use Hydraulic Controls

Conveniently located. Drive and steer the hopper with precision, with controls directly beside the joystick to raise and lower the wheels.



46HP Water Cooled Yanmar Diesel Engine

Maximum efficiency for the drive over hopper and years of trouble free service backed up by Yanmar's large service network.



Hydraulic Drive & Steering

The wheel is driven directly by high torque, dual drive hydraulic motors and precise steering makes it easy to reposition.



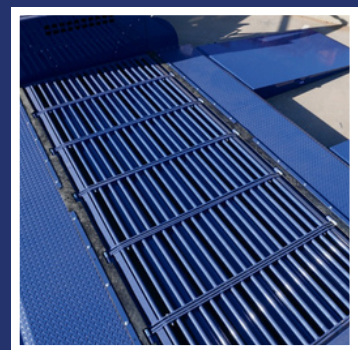
Hydraulic Raise & Lower Rotatable Wheels

The large rear wheels are raised and lowered hydraulically and can be rotated 90 degrees to allow easy movement in any direction.



Hydraulic Folding Ramps

The ramps and anti-spill gates are effortless to control with independent hydraulic controls for each ramp and anti spill gate.



Heavy Duty Hopper

The hopper has been designed and built to withstand the harshest environments and the removable grates provide easy access to the hopper flights and bearings.



Grainline



1800 810 498
sales@grainline.com.au
www.grainline.com.au

1 Hartog Place (PO Box 2079),
East Wagga Wagga NSW 2650

2/27 Christable Way, Landsdale, Perth, WA 6065

