

DRIVE OVER HOPPER



DRIVE OVER HOPPER SPECS

Engine	46hp Water cooled Yanmar diesel engine
Augers	2 x 12" augers
Unloading Capacity	Up to 350 T/h (wheat)
Hopper Flights	5 x 6" auger flights
Auger Outlet Height	1.97m
Hopper Dimensions	3.3m w x 1.5m l x 0.24m h
Operational Dimensions	9.9m w x 6.5m l x 2.6m h
Transport Dimensions	9.9m l x 2.0m w x 2.7m h
Standard Features	Hydraulic drive wheel and steering Hydraulic ramp and gate folding
Warranty	12 months



www.grainline.com.au | 1800 810 498

Quick and easy to shift with hydraulic lift, drive, and steer.

Featuring a large hopper with a low-profile design, it's built to withstand harsh Australian conditions and ensures safe, efficient operations without splitting trailers or reversing trucks. Tow hitch provided for towable option.



Easy-To-Use Hydraulic Controls

Conveniently located. Drive and steer the hopper with precision, with controls directly beside the joystick to raise and lower the wheels.



46HP Water Cooled Yanmar Diesel Engine

Maximum efficiency for the drive over hopper and years of trouble free service backed up by Yanmar's large service network.



Hydraulic Drive & Steering

The wheel is driven directly by high torque, dual drive hydraulic motors and precise steering makes it easy to reposition.



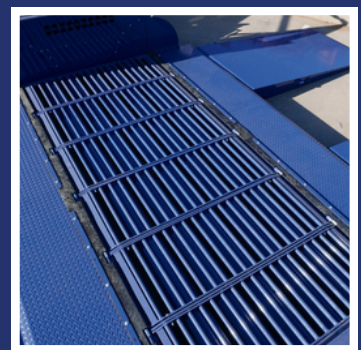
Hydraulic Raise & Lower Rotatable Wheels

The large rear wheels are raised and lowered hydraulically and can be rotated 90 degrees to allow easy movement in any direction.



Hydraulic Folding Ramps

The ramps and anti-spill gates are effortless to control with independent hydraulic controls for each ramp and anti spill gate.



Heavy Duty Hopper

The hopper has been designed and built to withstand the harshest environments and the removable grates provide easy access to the hopper flights and bearings.

