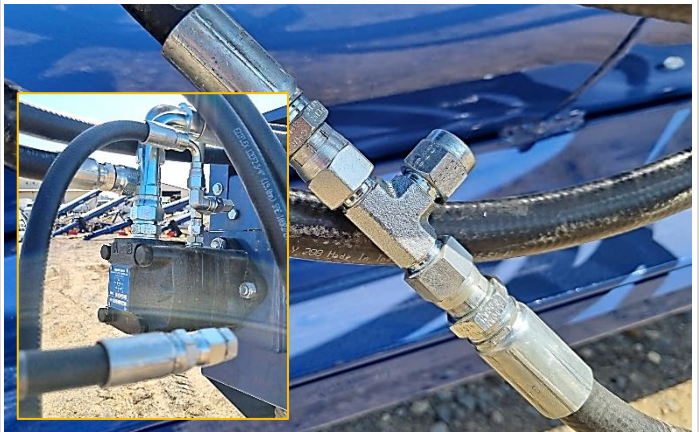


Swing Away Augers – Hydraulic Operation Guide

Important! Prior to starting, verify that the tractor that you intend to use has a minimum hydraulic flow rate of 65 litres per minute and that the tractor is fitted with hydraulic cooling.

1. Locate 3/8" diameter case drain hose running from hydraulic motor, and hose running from winch with T piece. Remove plug from line and T piece. Connect case drain line to T piece and fasten.



2. Locate quick release fitting on end of case drain hose and connect to tractor case drain.
Warning: Ensure case drain line is properly connected to the tractor. This is critical for the correct and safe functionality of the hydraulic winch.



3. Locate 1/2 inch hydraulic lines with quick release couplings and connect to the tractor. These are to operate the hydraulic winch



4. Locate 3/4 inch hydraulic lines with quick release fittings and connect to the tractor. These provide power to the motors on the swing away auger section and hopper.



5. Ensure tractor is isolated, then proceed to connect PTO shaft.



6. Start tractor and engage hydraulics for hopper drive and then for the winch. Ensure all connections are working correctly. Turn off tractor, Check hydraulic fluid level and top up if required.



7. When ready to start moving grain through the auger, start tractor, engage PTO and then engage hydraulics. Monitor grain flow through the site glass on the side of the auger.



8. If hopper speed does not match speed of main auger during operation, use flow control valve to adjust speed of hopper flighting. To reduce speed, turn the valve clockwise and anticlockwise to increase speed.



9. Use the supplied tachometer to accurately monitor and set speed of the hopper flight.

